

Basic 9x36

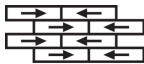
Product Type	Carpet Tile	
Collection	Space Worx	
Style Number	5T277	
Construction	Multi-Level Pattern Loop	
Fiber	Ecosolution Q® Nylon	
Dye Method	100% Solution Dyed	
Primary Backing	Synthetic	
Secondary Backing	Ecoworx® Tile	
Protective Treatments	SSP® Shaw Soil Protection	
	u.s.	metric
Product Size	9 in x 36 in	23 cm x 91 cm
Area Per Carton	45 ft²	4.18 m²
Pieces Per Carton	20 pcs	
Gauge	1/10 in	39.4 per 10 cm
Stitches	8.5 per in	34.5 per 10 cm
Average Density	4457 oz/yd³	0.165 g/cm³
Total Thickness	0.228 in	5.79 mm
Tufted Weight	13 oz/yd²	440.8 g/m²



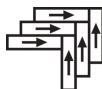
Recommended Installation Method



Ashlar



Brick



Herringbone



Monolithic

Data + Testing

Radiant Panel	Class I
Nbs Smoke	Less Than 450
Electrostatic Propensity	Less Than 3.5 kv
Pill Test	Pass*
Ada Compliance	>0.6, Meets the recommended static coefficient of friction for ADA walking surfaces and accessible routes***

Warranties

Lifetime Commercial Limited

Coordinating Products

Carpet Tile: **Basic Tile, Centric Tile, Primary Tile, Surround Tile**

Material Health & Environmental Certifications

Certifications Below Apply Exclusively To The Carpet Tile Rug Itself And Not The Lokworx Tabs Adhesive

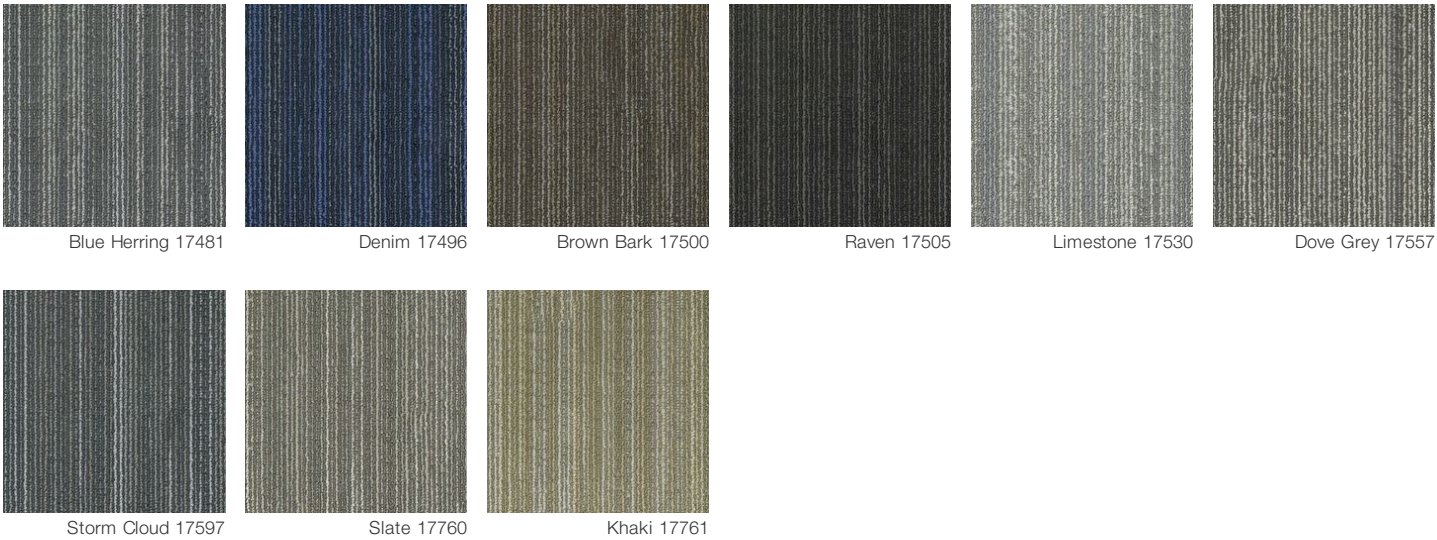
Climate Impact

Embodied Carbon (Cradle to Gate)	10.7 (based upon 19.6 oz face weight) kg CO ₂ /m ²
Life-Cycle Carbon Emissions****	Carbon Neutral
Total Recycled Content	40% (Pre-Consumer 40% Post-Consumer 0%)

Global Product Assessment

Country of Origin** | China

Available Colorways



Additional Information

***This carpet is manufactured to be ADA compliant, but to be fully ADA compliant, the end-user must ensure the carpet is adhered to the floor and installed as outlined in the ADA standards.

****Life-Cycle is modeled from US manufacturing.

Specifications are subject to nominal manufacturing variance. Material supply and/or manufacturing processes may necessitate changes without notice.

This product is an exclusive design and may not be duplicated in any manner. Use of this design in the creation of another product design is also strictly prohibited.

Visit shawcontract.com/testing for more information.